



***Riverside County Integrated Project:
An innovative model for integrating
land use, transportation and
conservation planning***

Revitalizing the Suburbs
Edward J. Blakely Center for Sustainable
Suburban Development
January 25, 2007
Cathy Bechtel



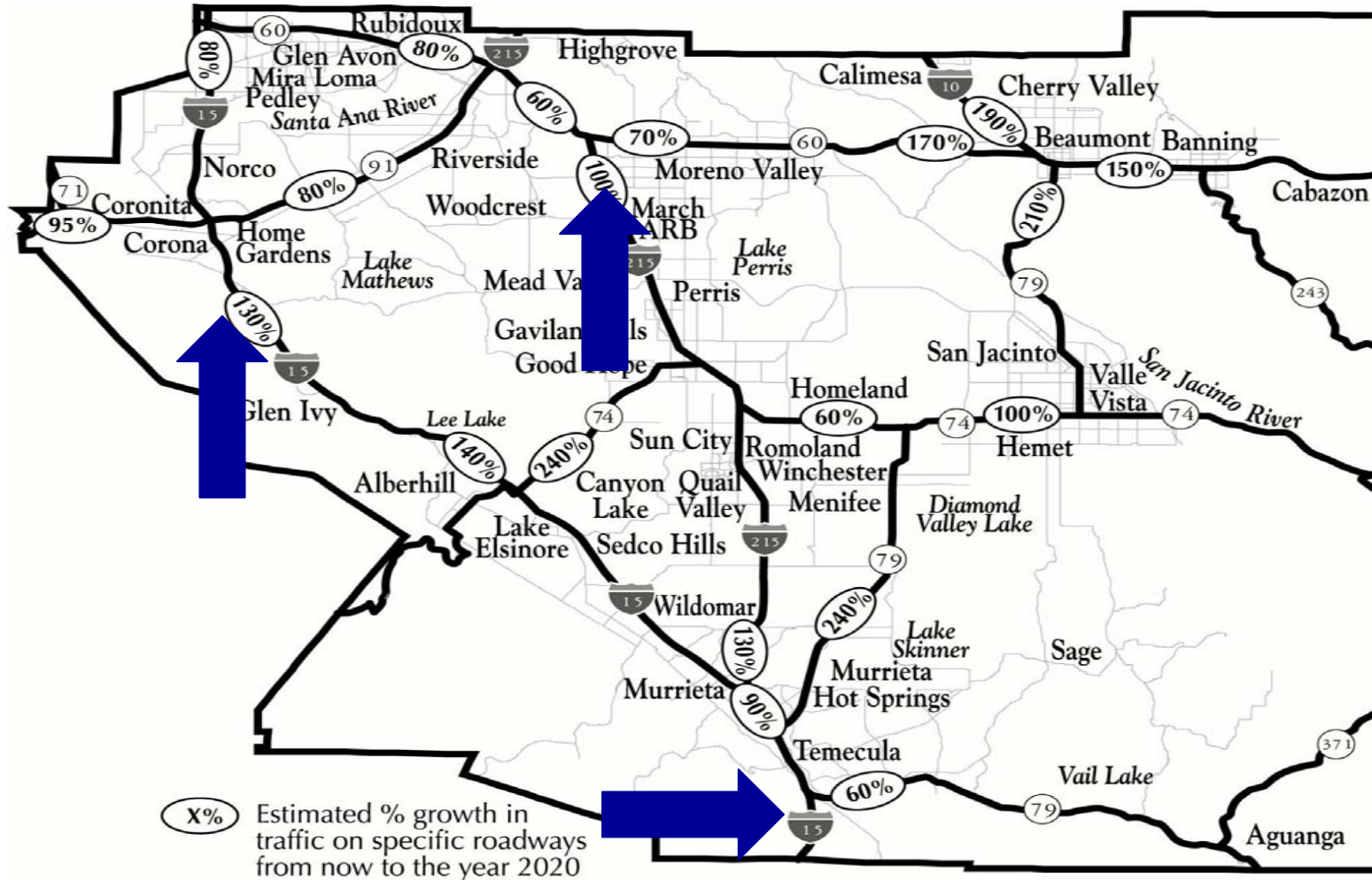
RCTC's Mission



- Play a leadership role in improving mobility in Riverside County
- Oversee funding and coordination of all county public transportation services
- Implementing agency for the Measure A Transportation Improvement Program
- SAFE, FSP, Transit



Traffic Volume Increases by Year 2020



Riverside County Integrated Project ~ RCIP ~



- **Initiated by the Riverside County Board of Supervisors in 1999**
- **Recognition that land use and infrastructure decisions are driven by environmental issues**
- **Deal with environmental issues as part of land use and infrastructure planning**

*Riverside County Integrated
Project ~ RCIP ~*



**RCIP is a Four Part Integrated and
Complementary Program**

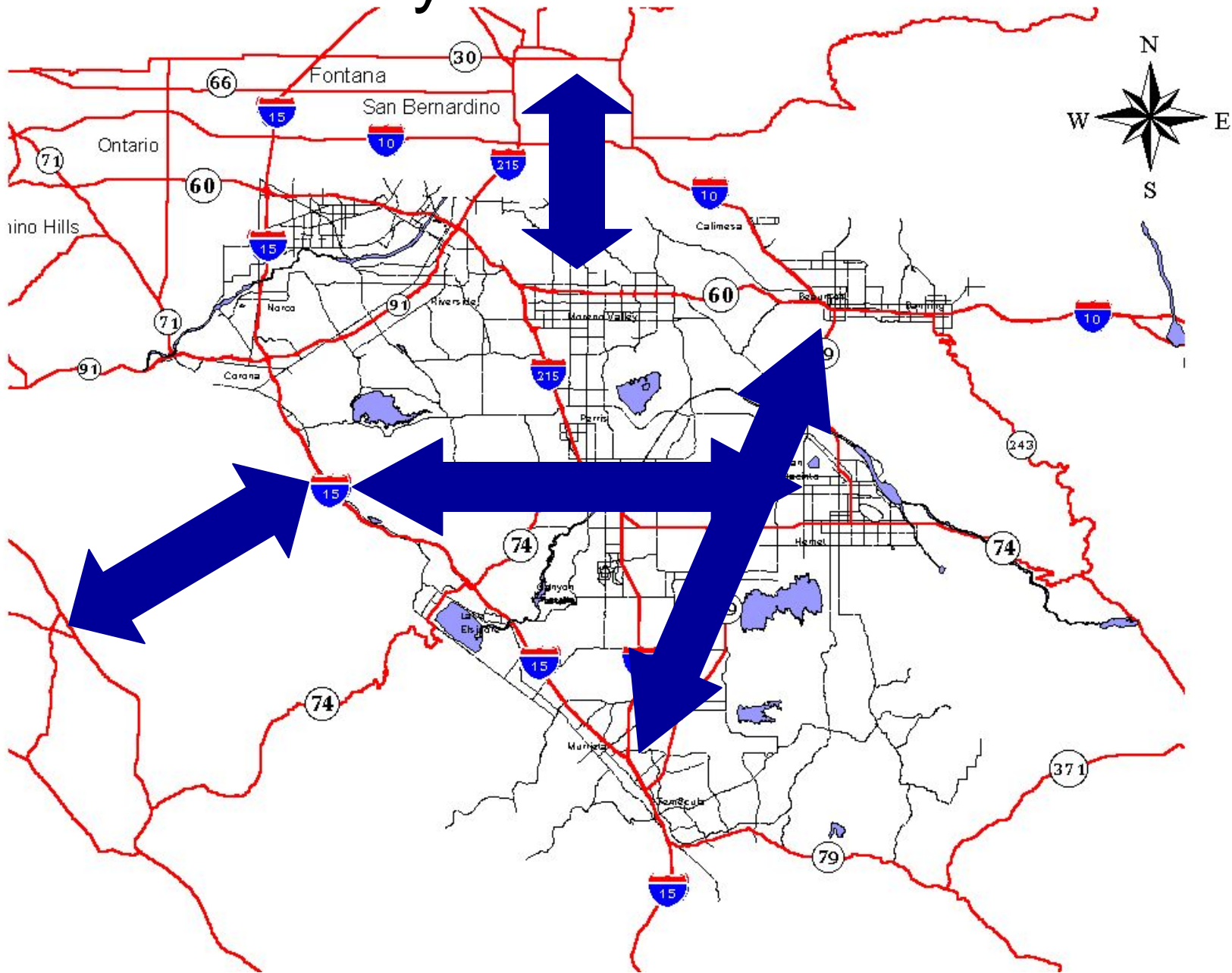
- ***New General Plan for the County***
- ***Habitat Conservation-MSHCP***
- ***Special Area Management Plan-SAMP***
- ***Major Transportation Corridors-CETAP***

Overall Transportation Strategy



- **Promote job growth**
- **Serious effort to expand freeway and arterial system**
- **Develop/expand transit spine network**
- **Promote development at transit nodes**
- ***Have transportation integrated with conservation efforts and land use decisions***

Four Priority Corridors



MSHCP



- **Is the linchpin of the RCIP**
- **Considers species protection as an element of planning and construction**
- **Adopted by all 14 cities in the western county in June 2003**
- **USFWS/DFG issued permits June 2004**

MSHCP: Fundamentals



- **Designed to protect up to 146 species (32 listed species)**
- **Plan area encompasses 1.2 million acres**
- **Planned reserve of 500,000 acres**
 - **347,000 acres existing**
 - **153,000 additional reserve lands**
 - **Linkages between core habitats and existing public conservation areas**

MSHCP Benefits



- **Provides coverage and mitigation for all western county transportation requirements and other critical infrastructure**
- **Umbrella Federal and State permits to “take” endangered species—streamlines regulatory review**
- **Open space secured**
- **Public access of natural areas**
- **Greater certainty in development process**

+153,000 acres

General Plan



Innovative concepts included in the new county-wide Plan:



Clustered development

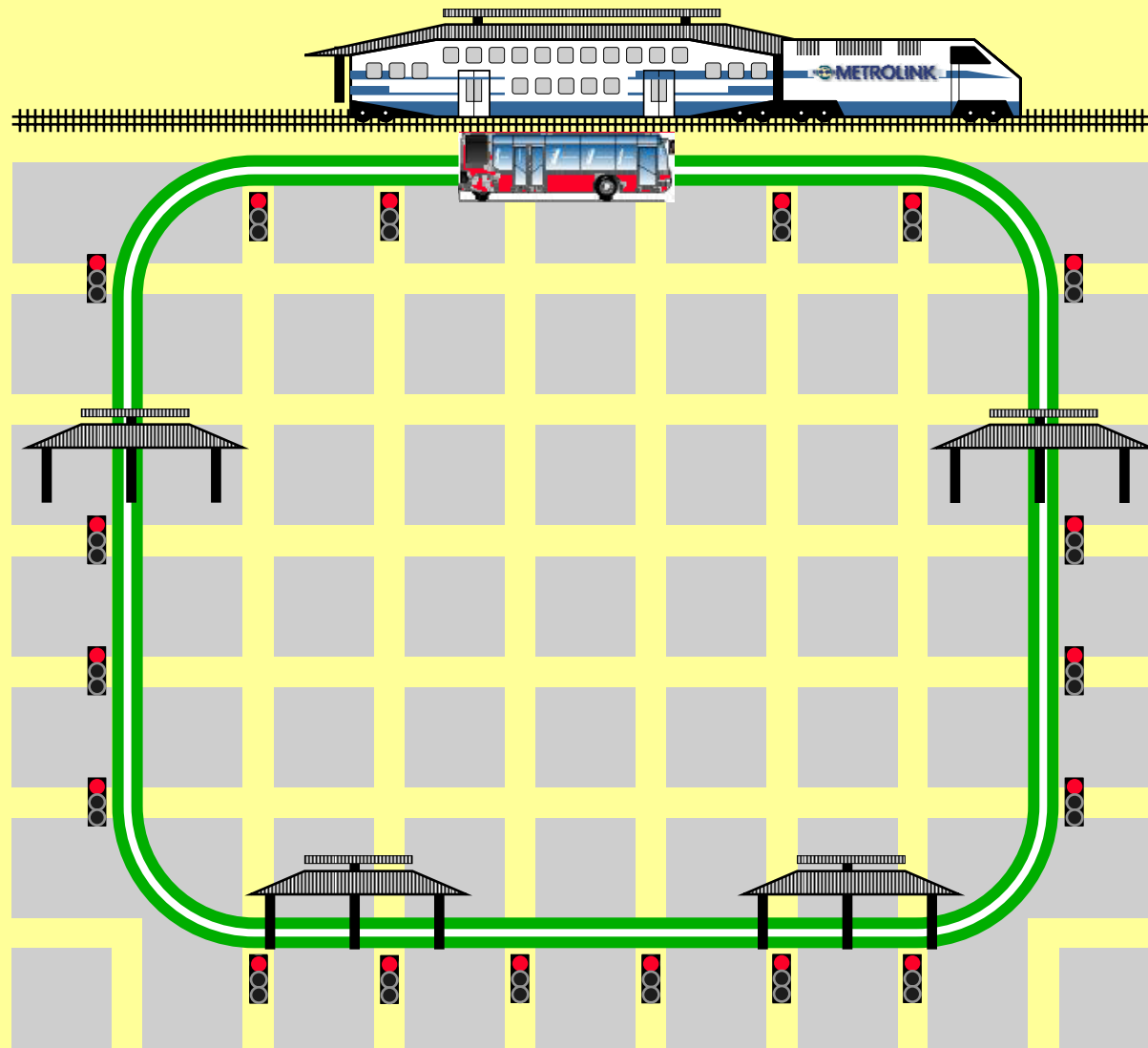
•Encouraged compact development and permanent preservation of open space

Community Centers

•Planned focal points that integrate housing, retail, office, and recreation

•Desire to accommodate a portion of future growth by allowing increased densities to reduce sprawl

How a Transit Oasis Works



A station is located on the Metrolink or Regional Flyer network.

A Community Center is developed as a pedestrian-friendly environment.

A Transit Oasis is built as part of the Community Center.

A Transit Oasis shuttle waits for the express to arrive.

The shuttle proceeds nonstop from Station to Station along the Transit Oasis.

Since the Transit Oasis behaves like a light rail vehicle, it completes its loop rapidly.

The shuttle circulates all day, connecting with expresses and serving internal trips.

RCIP Accomplishments



- **CETAP Recognized under E.O. 13274 for Environmental Stewardship and Transportation Infrastructure**
- **Plans adopted in 2003**
- **Regional Conservation Authority created to implement the MSHCP**
- **Reserve Assembly underway, *almost 36,000 acres already added to reserve***

RCTC Supported Efforts



- **Perris Valley Line**
- **Rail feasibility studies**
- **Express bus**
- **Commuter Assistance programs to support ridesharing**
- **Joint development/Transit Oriented Development**

PVL Service Facts

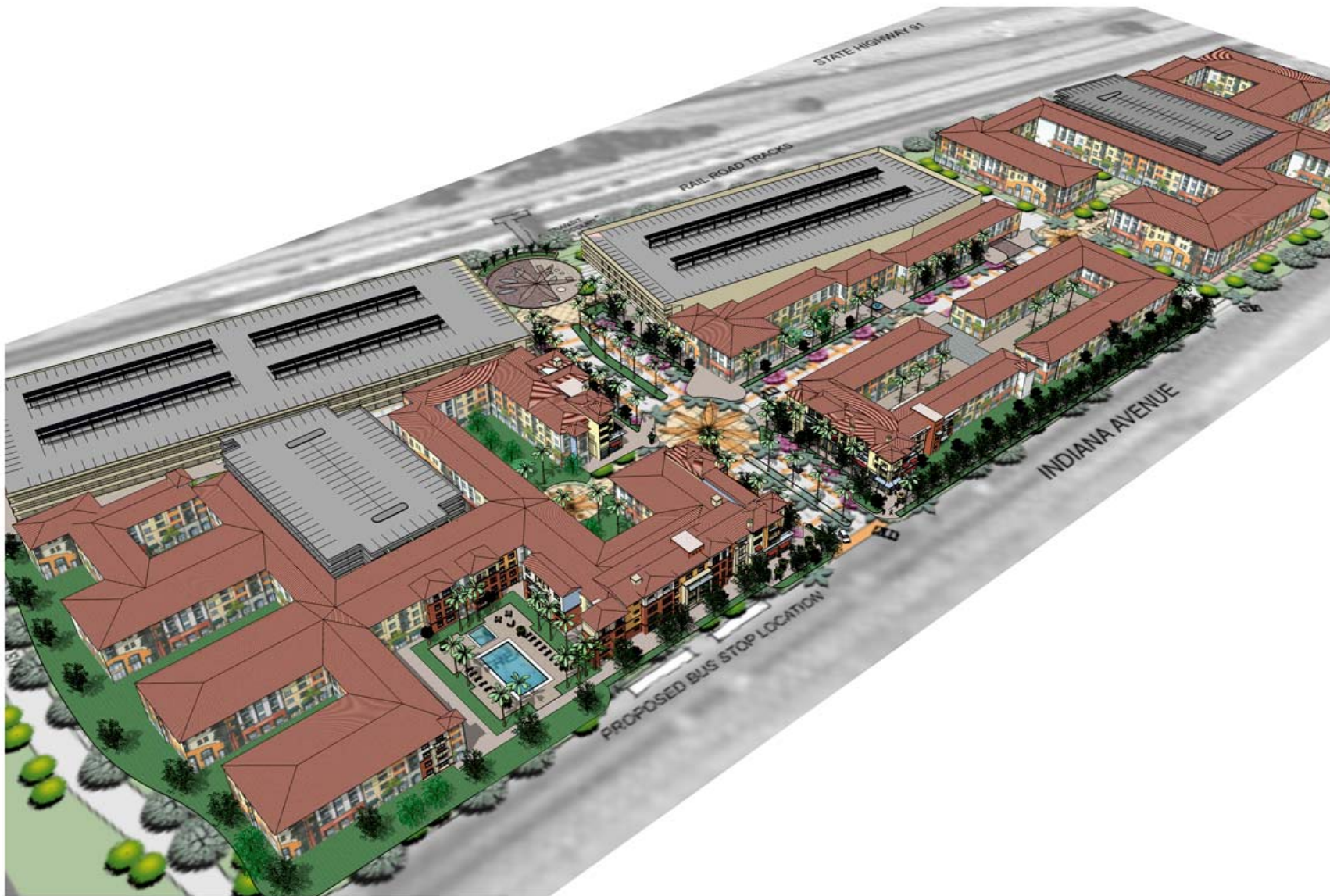
- **\$179 million project cost**
- **22.7 miles long**
- **Eight trips per day at start-up**
- **Travel time of 40 minutes from Perris**
- **Travel time of 20 minutes from Alessandro**
- **Extends an existing Metrolink line to more of Riverside County**



Joint Development Guidelines



- **Promote and enhance rail transit ridership**
- **Enhance and protect the commuter rail station and corridor**
- **Encourage comprehensive and complementary planning and development around RCTC-owned station sites**
- **Reduce auto use and congestion through encouragement of rail transit-linked development**
- **Demonstrate a fiscal benefit to the Commission based on a fair market return on public investment**



GATEWAY RIVERSIDE TRANSIT VILLAGE

RIVERSIDE, CALIFORNIA



5141 CALIFORNIA AVENUE, SUITE 250, IRVINE, CA (949) 863-4200 FAX: (949) 863-4203

ARCHITECTS ORANGE
 144 NORTH ORANGE ST., ORANGE, CALIFORNIA 92666 (714) 639-9860

06-048 May 17, 2006



© 2006 Architects Orange
 These plans are copyright protected under
 state and federal laws and are not to be
 reproduced or used in any manner
 without written permission by Architects Orange.



GATEWAY RIVERSIDE TRANSIT VILLAGE

RIVERSIDE, CALIFORNIA



5141 CALIFORNIA AVENUE, SUITE 250, IRVINE, CA (949) 863-4200 FAX: (949) 863-4203

ARCHITECTS ORANGE
 144 NORTH ORANGE ST., ORANGE, CALIFORNIA 92666 (714) 639-9860

06-048 May 17, 2006



© 2006 Architects Orange
 These plans are copyright protected under
 state and federal laws and may be reproduced or
 transmitted in any form or by any means
 without written permission by Architects Orange.

For More Information...



On the Riverside County Integrated Project:

www.rcip.org

On the MSHCP:

www.wrc-rca.org

On the General Plan:

www.rctlma.org/generalplan

On RCTC or CETAP:

www.rctc.org or www.rcip.org/transportation

Call or email Cathy Bechtel at:
cbechtel@rctc.org
(951) 787-7141